



---

## COMPETITION GUIDE

TURN ONE CRA PRO SERIES ▪ MOTOR CITY 125  
FLAT ROCK SPEEDWAY

JUNE 6, 2026

---





Champion Racing Association  
 PO Box 186  
 Woodville, Wisconsin 54028  
 cra-racing.com  
 scott@mdmpromotions.net



**EVENT INFORMATION**  
 MOTOR CITY 125  
 FLAT ROCK SPEEDWAY

**Competition Guide Contents:**

Page 2 – Event Information	Page 5 – Garage Area	Page 8 – Practice & Qualifying
Page 3 – Schedule of Events	Page 6 – Order of Inspection & Notice	Page 9 – Race Format
Page 4 – Hauler Staging Map	Page 7 – Inspection Procedure	Page 10 – Race Procedures

**Event Name:** n/a

**Race Name:** Motor City 125 Presented by Explore Monroe

**Sanctioning Body:** Turn One CRA Pro Series Presented by Chevrolet Performance & ASA/CRA Super Series

**Race:** CRA Pro Series Points Race 2 of 10 / ASA/CRA Super Series Points Race 1 of 6

**Date:** Saturday, June 6, 2026    **Rain Date:** To Be Determined (Sunday, June 7 is not a viable rain date)

**TV Streaming:** TrackTV & Racing America

**Local Radio:** n/a

**Timing & Scoring:** Race Monitor Mobile App

<b>Flat Rock Speedway</b> 14041 Telegraph Road Carleton, Michigan 48117	<b>Shipping to Flat Rock Speedway</b> 14041 Telegraph Road Carleton, Michigan 48117
---	---

**Phone:** 734-782-2480    **Web:** flatrockspeedway.com

**Event Promoter:** Flat Rock Speedway

DIRECTORY					
Marty Melo	Series Owner	530-941-5642	marty@mdmpromotions.net	CRA	Off-site
Scott Menlen	Series Director	586-201-0378	scott@mdmpromotoins.net	CRA	On-site
Rick Turner	Chief Technical Inspector	765-748-8820	rtrmotorsports26@gmail.com	CRA	On-site
Misty Melo	Administration	530-941-2487	misty@mdmpromotions.net	CRA	Off-site
John Brolick	Hoosier Tire Distributor	708-603-0476	jbrollick@gmail.com	-	On-site
Jonathan Ramos	Media Director	786-877-3784	ramos@mdmpromotions.net	CRA	On-site
Eric Young	Photography	989-513-2740	eric@dreambiggermedia.com	CRA	On-site
Brandon Hamby	General Manager	734-782-2480	bhamby@marcumracing.com	Track	On-site
Liam	Media Director	734-782-2480	lmorast@marcumracing.com	Track	On-Site

**Motor City 125 Prize Money Schedule:** 1) \$4,000, 2) \$2,000, 3) \$1,000, 4) \$850, 5) \$750, 6) \$650, 7) \$600, 8) \$550, 9) \$540, 10) \$530, 11) \$520, 12) \$510, 13-24) \$500, Additional Starters \$250, Tow \$150

**Product Certificate Awards:** Bassett Wheels, P3, \$100; Five Star Race Car Bodies, Hard Luck Award, \$100; Holly Performance Parts, P6, \$100; Longacre Racing, P10, \$100; MSD Ignition, P9, \$100; Simpson Race Products, P2, \$100; Swift Springs, P4, (1) Spring; The Joie of Seating, P7, \$300

**Special Event Awards:** n/a    **CRA Platinum Bonus Program:** Contracted Teams 1-12) \$250.

**Series Contingency Sponsors:** Bassett Wheels, Chevrolet Performance, Five Star Race Car Bodies, Hamke Race Cars, HDfive, Holley Performance Parts, La Joie of Seating, Longacre Products, MSD Ignition, P1 Chassis, Pepper Jack Kennels, Port City Race Cars, Racing Electronics, Simpson Race Products, Sunoco Race Fuel, Swift Springs, Turn One Performance, VanDoorn Racing Development. All significant contributors to event purse, bonuses, and points fund.



**SCHEDULE OF EVENTS**  
MOTOR CITY 125  
FLAT ROCK SPEEDWAY

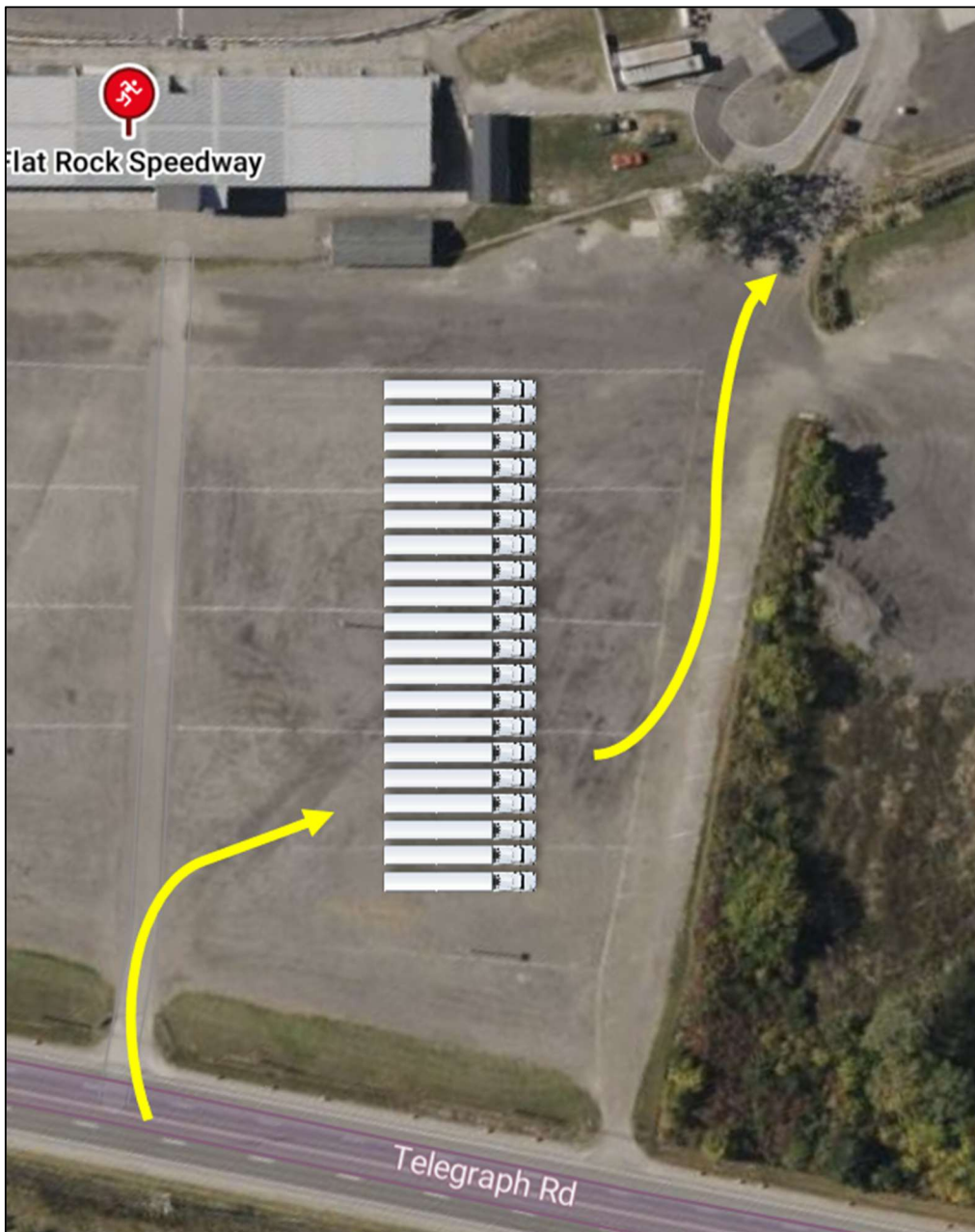
**Saturday, June 6, 2026**

- 9:00 AM CRA Hauler Parking (No Unloading. No Outlaw Haulers)
- 9:30 AM Credential Office & Garage Area Opens | Outlaw Super Late Model Hauler Parking
- TO FOLLOW* CRA Registration & Draw Opens (at Series Trailer)
- 9:50 AM CRA Crew Chief Meeting (at Series Trailer)
- 10:00 AM CRA Technical Inspection Begins (by Schedule)
- 11:30 AM Outlaw Super Late Model Inspection Begins
- 11:45 AM CRA Driver Meeting (at Series Trailer)
- 12:15 PM Outlaw Super Late Model Driver Meeting
- 12:30-1:15 PM Turn One CRA Pro Series Practice 1 (45 Minutes) | Grandstands Open**
- 1:15-1:55 PM Outlaw Super Late Model Practice 1 (40 Minutes)
- 2:00-2:30 PM Turn One CRA Pro Series Final Practice (30 Minutes)**
- 2:30-2:50 PM Outlaw Super Late Model Final Practice (20 Minutes)
- 3:10 PM CRA Qualifying Tires Released
- 3:30 PM CRA Cars Must be in Staging (Late Penalty Applies)
- 3:40 PM Turn One CRA Pro Series Qualifying (Post-Qualifying Inspection Procedure)**
- TO FOLLOW* CRA Redraw (at Series Trailer)
- 4:10 PM Outlaw Super Late Model Qualifying (Cars Remain in Infield for Autograph Session)
- 4:40 PM CRA Cars Move to Grid
- 4:55-5:30 PM Driver Autograph Session (On-Track) | CRA Teams Move Equipment to Pit Road
- 5:35 PM Pre-Race Ceremony
- Introduction of Dignitaries & Honorary Guests
  - Driver Introductions
  - Canadian National Anthem
  - Presentation of Color
  - Invocation
  - National Anthem of the United States of America
  - Command to Start Engines
- 6:05 PM Turn One CRA Pro Series Motor City 125 Presented by Explore Monroe**
- TO FOLLOW* Outlaw Super Late Model DTS Drive Train Specialists Joy Fair Memorial 100



**HAULER STAGING**  
 MOTOR CITY 125  
 FLAT ROCK SPEEDWAY

**Arrival:** Haulers use the main entrance on Telegraph Road. Park the hauler in the corresponding staging area, in order, as reflected on the map below. Officials will direct you into the pit area when the time comes. Only the hauler driver may enter the pit area to park the hauler at 9:00. The garage area will officially open at 9:30. No unloading until 9:30.



1	81 Carson Brown
2	14 Chase Pinsonneault
3	71 Blake Rowe
4	23 Billy VanMeter
5	23 Eddie VanMeter
6	28 Kevin Cremonesi
7	24 Sam Johnson
8	32 Chris Shannon
9	87 Chloe Mazzagatti
10	47 Greg Stilwell
11	45 Michael Simko
12	33 Albert Francis
13	5 Will Sahutske
14	711 Gabrielle Grigsby
15	4 Justin Schroeder
16	116 Evan Varney
17	13 Brandon Marhefka
18	50 Seth Christensen
19	71 Jesse Laquerre
20	22 Jimmy Tucker
21	9 Guy Fire



**GARAGE AREA**  
 MOTOR CITY 125  
 FLAT ROCK SPEEDWAY

The minimum age limit is 13, with a signed minor release on file with the track. Parent(s) must be at the track with child. Child is not to be unattended at any time. No one under age of 18 permitted down inside track at any time. For more information contact Flat Rock Speedway by calling 734-782-2480.

Passenger vehicles may not enter the garage area.

No Four Wheelers, ATVs, Golf Carts, etc. except to move cars and pit boxes.

Pets are not allowed.

Open toed shoes and sandals are not allowed.

Please discard all waste in provided trash cans or, if none are available, please place all waste in closed trash bags.



Hauler parking is assigned by 2026 CRA Pro Series Owner Standings and 2025 ASA/CRA Super Series Owner Standings, with consideration of multi-car teams. Teams must park haulers in assigned parking spot. Teams will Practice and Qualify from the trailers in the garage. The infield pit road will be used for the race only.



## ORDER OF INSPECTION & TECHNICAL NOTICE

MOTOR CITY 125  
 FLAT ROCK SPEEDWAY

### Saturday Inspection Schedule

TIME	TEAM
10:00	22 Jimmy Tucker
10:06	28 Kevin Cremonesi
10:12	14 Chase Pinsonneault
10:18	23 Billy VanMeter
10:24	71 Blake Rowe
10:30	711 Gabrielle Grigsby
10:36	45 Michael Simko
10:42	33 Albert Francis
10:48	24 Sam Johnson
10:54	32 Chris Shannon
11:00	5 Will Sahutske
11:06	87 Chloe Mazzagatti
11:12	81 Carson Brown
11:18	23 Eddie VanMeter
11:24	9 Guy Fire
11:30	4 Justin Schroeder
11:36	116 Evan Varney
11:42	13 Brandon Marhefka
- DRIVER MEETING -	
12:00	47 Greg Stilwell Jr.
12:06	50 Seth Christensen
12:12	71 Jesse Laquerre

*Cars not on this list may present for inspection after the last car on this list.*

2026 Rulebook. A car with a Super Late Model engine may not declare Pro Late Model status. A car with a crate engine may declare Pro Late Model or Super Late Model status. Super Late Models will only score points towards the ASA/CRA Super Series Championship. Pro Late Models will score points towards both the CRA Pro Series Championship and the ASA/CRA Super Series Championships.

### Tech Bulletin

March 17, 2026: Addressing Vehicle Engine and Weight

Section B Engine, Section 2 Engine Options, Rule 1: Unaltered GM # 88958604 / 88869604 with factory seals only will receive a 100 lb. weight break. Can replace oil pan with Champ oil pan # CP106LTRB. Oil pan must be sealed by a certified S.E.A.L. builder. Maximum 6500 rpm. This engine combination will comply with a 25 lbs. weight addition (2,725 lbs.) at the following events: June 6 - Flat Rock Speedway and September 11 - Berlin Raceway. See CRA Pro Series General Rules & Procedures, Section 8-A for vehicle weight table. In the interest of fair competition, Series Officials reserve the right to adjust weights at the event, if deemed necessary.

### MSD Ignition Program

Cars are required to compete with Series provided MSD Ignition Box Trays. Please see Turn One CRA Pro Series 2026 General Rules & Procedures (Section 8-B) for Ignition Program rules as described in the Rulebook. It is the responsibility of the team to have the car prepared to install the Series provided MSD Ignition Box Tray without altering any part of the ignition box tray.

Series provided Ignition Box Trays include the following components, which may not be altered or replaced: MSD Ignition Box part #6427 6CT, MSD Ignition Coil part #8252, Quick Car Wiring Harness part #50-2053, and Quick Car ignition box tray.

Tampering with and/or attempting to manipulate any component of the Series provide Ignition Box Tray is strictly prohibited.

It is recommended that the ignition tray has a separate ground wire. The chassis and roll cage are no longer considered an adequate ground.

### Combination Race Competition & Eligibility

Pro Late Models and Super Late Models compete in the same race together. The race is scores as one race and only one winner will be declared at the conclusion of the race. The race will be conducted using the CRA Pro Series General Rules and Procedures. Teams must declare Pro Late Model (CRA Pro Series) or Super Late Model (ASA/CRA Super Series) status. Team/car must adhere to the corresponding rulebook for vehicle specifications. A team declaring Pro Late Model status must follow the specifications and guidelines as written in the CRA Pro Series, United Late Model Rules Alliance 2026 Rulebook. A team declaring Super Late Model status must follow the specifications and guidelines as written in the ASA/CRA Super Series, United Late Model Rules Alliance



**TECHNICAL INSPECTION**  
MOTOR CITY 125  
FLAT ROCK SPEEDWAY

### **General Procedures**

It is required that the Crew Chiefs attend the scheduled Crew Chief Meeting [9:50 AM].

The draw conducted at the series trailer is the same draw used for ignition boxes and qualifying order.

Lead weight must be painted white with car number marked.

Any safety infractions found during inspection must be rectified prior to Practice 1.

Cars must display series windshield and required contingency decals and a transponder is required to be on the car at all times the car is on track.

No scuffing tires in the garage area, on pit road, or around track safety workers/officials.

Courtesy Laps: Any team (car) that has been on track and needs to go to a backup car must notify Chief Technical Inspector and upon approval could be given the following options; 1) Will be given safety laps, but must start at the rear of the field, 2) Qualify following normal procedures with no safety laps.

### **Technical Inspection**

All cars are required to go through the inspection line, on Saturday morning, at the designated time. Times are assigned by order of entries with platinum teams ahead of standard entries. Tech line stations include but are not limited to safety, templates, referee, scales, under car, and under hood.

Please have driver safety gear readily available when presenting the car for inspection through the tech line. Cars failing safety inspection may not take to the track until all infractions are rectified.

Cars shall have 30 lbs. of air in the right side and 20 lbs. in the left side tires while in the inspection area.

Weight will be checked with driver sitting in driver seat, steering wheel in place with hands on steering wheel, and helmet on head or in lap.

A maximum of four crew members may be with the car in the inspection area.

### **Post-Qualifying Inspection Procedure**

**The top eight qualifiers will be captured in the garage area for inspection, after qualifying.** Standard inspection procedure apply. Cars failing inspection will have their lap times disallowed.

### **Qualifying Impound**

Cars will be impounded after qualifying. The only adjustments allowed in impound are air pressure, stagger (may be checked with a stagger stick only), check and tighten lug nuts, tape on the nose and brake ducts, and driver comfort. A maximum of four crew members are allowed at the car. Once adjustments are complete, crews must leave car and may not return until given permission to do so by series official. Teams may not pull out of impound or work on race car in impound. Working on, or attempting to work on, an impounded race car constitutes an unapproved adjustment and is subject to penalties. If permitted by the Chief Technical Inspector/Series Director, teams may rectify only the declared mechanical failure(s) and will forfeit their starting position. Any attempts to make additional adjustments to the race car outside of the declared mechanical issue may result in lap penalties.



**PRACTICE & QUALIFYING**  
MOTOR CITY 125  
FLAT ROCK SPEEDWAY

### **Practice Procedures**

Car numbers in all locations, windshield valance, and contingency decals as described in the rulebook, and series administered transponder are required to be installed on the race car for Practice.

A Spotter or Crew Chief is required to monitor race control via scanner during Practice (467.7875).

For this event, Practice will be conducted in 8 to 12 lap sessions of approximately 8 to 10 cars in each group.

All working/servicing the race car must be performed in the garage area. Teams may not work from the infield.

Garage Speed is 15MPH. No scuffing tires in the garage.

Failure to comply with practice/pit procedures including but not limited to; staging, speeding in the garage, running the stop sign, scuffing tires, etc., may result in penalties including loss of practice time.

### **Qualifying**

For this event, all cars must be staged by 3:30 PM. Cars will stage in their pit stall behind the hauler. Car must be on the ground with the nose facing out (away from the hauler) and all work, other than the approved qualifying adjustments, must be completed. The approved Qualifying Adjustments are tape on the grill screen and brake ducts, air pressure, check lug nuts, and driver comfort. Cars not staged by the designated time may be placed under penalty, forfeiting the fastest of their two qualifying lap times.

All tents/canopies MUST be removed from the concrete/asphalt in the garage by 3:30 PM.

Cars will be called to the lineup area, in order. Please wait until called up by officials.

The order of qualifying is determined by draw. Cars must qualify in the proper order. If a car misses their position, the team will be placed on a 5-minute clock to present the car for qualifying. Once the 5-minutes expire, that car may not qualify.

Qualifying will be conducted one car at a time. Each car will receive one warm up lap and two laps on the clock. Cars may only make one qualifying attempt. An attempt is officially made when the car passes the finish line to begin the first lap on the clock.

After the checkered flag, cars will report directly to the figure-eight track in the infield. Use turn 2 to access the infield. This is an impound race. Once qualifying is completed, all cars will be moved to the garage for inspection and/or impound. Crews may not touch the car until given permission to do so by series officials, once inside the impound area. In the event of inclement weather or time delays, series at its discretion may change the format of qualifying to a group qualifying format. If qualifying is canceled, the field will be set by CRA Pro Series 2025 Owner Standings and ASA/CRA Super Series 2025 Owner Standings. Car Owners that have not earned any points in 2025 will be lined up by order of entry behind those with points.



**RACE FORMAT**  
MOTOR CITY 125  
FLAT ROCK SPEEDWAY

### **Feature Race**

The race is 125 laps. Caution laps do not count. There will be a competition caution after 50 consecutive green flag laps. There will not be a competition caution within the last 10 laps of the race. The event can go over the advertised number of laps if an 'overtime finishing procedure' is required. The race is complete after three overtime finishing procedure attempts.

### **Starting Lineup**

The fastest eight qualifiers will draw for starting positions 1 through 8. The individual draw will never be greater than half the field. For this event, the draw will take place at the series trailer at [APPROX. 4:15 PM]. Feature starting positions 9 through 20 are determined by qualifying. Feature starting positions 21 and 22 are determined by the finishing results of the last chance race. Feature starting positions 23 will be awarded to the highest car in CRA Pro Series 2025 championship owner point standings. Position 24 will be awarded to the highest car in ASA/CRA Super Seres 2025 championship owner standings. Additional starters may be added.

### **Pitting Procedure**

Cars shall remain single file behind the pace car during the caution. Do not pullup to pit. When pit road is open, remain in line until your car reaches the designated pit entry point.

For this event, the infield figure-eight track is used as pit lane. Cars will enter pit lane from turn 2 and exit pit lane from turn 4. Teams may setup pit boxes on either side of pit road. Pit stalls are not assigned on pit road.

The pit road speed limit is 25 mph.

Only traditional tools and procedures may be used during a pit stop. All pit equipment and crew must remain behind the pit wall until your car is in the box. A maximum of 5 crew members allowed to service the car. No shorts or open toe shoes are allowed for over the wall crew members.

Teams may take tires and fuel at the same time. All tire changes must be approved by a pit road official. Only scuff tires may be used for approved tire changes.

Pit Road infractions including but not limited to improper pit entry, improper pit exit, speeding, running the stop board, too many men over the wall, equipment leaving the box, etc. will result in a penalty of restarting at the tail of the field.

### **Tires**

The approved tires for competition are Hoosier Racing Tires ST1\* left side and ST3\* right side. This is a 4-tire maximum race. Teams may have a maximum of 4 scuff tires in their pit box, during the race, to be used as emergency spares.

Qualifying tires will be impounded until the designated release time [3:10 PM] after Final Practice. Tires must be scanned/stamped prior to leaving the impound area. Cars must qualify on sticker tires, from impound, purchased at the event, and start the race on the same tires used for qualifying.

All tires in the impound area should be stacked four high. The only items allowed in the impound area are a tire gauge, tire tape, and air hose. All wheels shall display car number decal.

### **Fuel**

This is a 10-gallon minimum Sunoco 110 fuel required purchase event. Fuel shall be purchased before qualifying inspection. For this event, fuel pumps are located toward the east end of the garage, near the track tech building.

## RACE PROCEDURES

**Initial Start:** Flagman starts the race. No jumping a start or changing lanes before the finish line. If a green flag lap is not completed on the initial start, there will be a complete restart with all cars back in their original starting position except for any cars that are penalized, receive assistance, or cars that pit.

**Yellow Flag:** There will be no racing back to the caution. When the yellow flag is displayed, all cars must slow to a caution pace and bunch up as quickly as safety allows, so safety crews can work on track. All cars must get single file and stay single file. Lineup disputes will be settled by race control. Failure to comply can result in penalties including being placed at the rear of the field and up to disqualification. No tire scuffing around workers on track.

**Cars Involved in the Caution:** Only car(s) directly involved in bringing out the caution will go to the tail of the field. Any cars that spin or stop to avoid and were not directly involved with the initial cause of the caution, will get their spots back if they do not receive assistance or go to pit road. Rough driving will not be tolerated. If contact with a car causes a yellow flag and the contact is not a "racing incident," that car will also be sent to the tail. Rough driving can result in penalties including being sent to the tail of the field, pass-through penalty, lap penalties, and/or possible disqualification from the event. Cars deemed intentionally stopping or creating their own caution will receive a two-lap penalty.

**Restart:** Restarts will always take place in the box coming off turn four. The restarts will be double file and will use the choose rule described below for restart lineup. The leader of the race is the control car and must maintain pace car speed (set by Race Control). The front row shall be side-by-side. Once the pace car leaves the field, the leader maintains pace car speed until the box. No slowing, weaving, brake checking, increase or decrease in speed once the pace car leaves the field. The leader accelerates first, at their descension, once in the box, before the end of the box. No jumping a start. If a restart violation occurs Race Control reserves the right to call the start back by displaying the yellow flag. The infringing car(s) will be assessed a warning. Two restart violations result in a penalty with the infringing car(s) restarting at the tail of the lead lap. Cars will not re-choose, rather the row will move up. On restarts, cars must stay in their lane and may not pass until the finish line. Changing lanes may result in a pass-through penalty. If a green flag lap is not completed before a yellow comes out all cars should go back to their prior position except for any cars that are penalized, receive assistance, or pit.

**Restart Lineup:** The field will be realigned according to the last completed lap. The field will be realigned in the following order: lead lap cars, lead lap cars that pitted, lapped cars, lapped cars that pitted, lead lap cars under penalty, lapped cars under penalty, free pass car, and waive around cars. Field will choose at designated point just past the finish line when instructed to by race control. All cars are eligible to choose at the cone. Restarts will be double file. Cars may choose the inside or outside lane as they approach the choose cone. If a car strikes the choose cone or changes lanes after the cone, that car must restart at the tail of the longest line. Cars that miss the choose lap will realign at the tail of the longest line. Any disputes in track position will be resolved by a call from race control. Failure to lineup in proper position may result in a pass-through penalty.

**Red Flag:** All cars must stop as quickly as safely possible when the red flag is displayed. Cars may go to the pits for crews to work on them, only after they have received approval from race control to do so. Cars pitting under red must restart at the tail of the field.

**Black Flag:** Cars that receive the black flag must go to pit road immediately. If a car does not go to pit road within three laps, that car's scoring will stop until the situation is rectified. Check with the spotter for guidance from race control.

**Free Pass:** At the time the caution comes out, the first car behind the leader one lap down will be deemed to be the Free Pass (if Free Pass is the cause of the yellow then it would go to the next car in line). Free pass will stay in their position (Free Pass may pit if they elect to and still retain the Free Pass), until directed to pass the pace car after the pit cycle is completed. No free pass will be awarded in the last 10 laps of the event.

**Slow Cars:** Slow cars will be advised in the drivers meeting which lane to utilize in the presence of lead lap cars during the race. Lapped cars that create problems for lead lap cars may be penalized. Lapped cars should let the leaders go by on the preferred lane and then resume racing. Lapped cars that are repeatedly passed without giving the preferred lane during the race may be penalized. Cars fighting to stay on the lead lap are not forced to yield to the leaders until the leader has passed them. Minimum speed is 120% of the fastest lap from Practice.

**Spotters:** Spotters are required to be in the designated spotters stand for all on track activities. Only one spotter per team is allowed in the spotter stand, no guest. Spotters must have the ability to listen to race control via a standard electronic scanner or dedicated radio at all times. The frequency for this event is CRA 467.7875. If the spotter leaves or is removed from the spotter's stand, the car will be black flagged.

**Post-Race:** The top five finishers report directly to the victory lane area. Crews may touch the cars only how and when they are directed to by series officials.